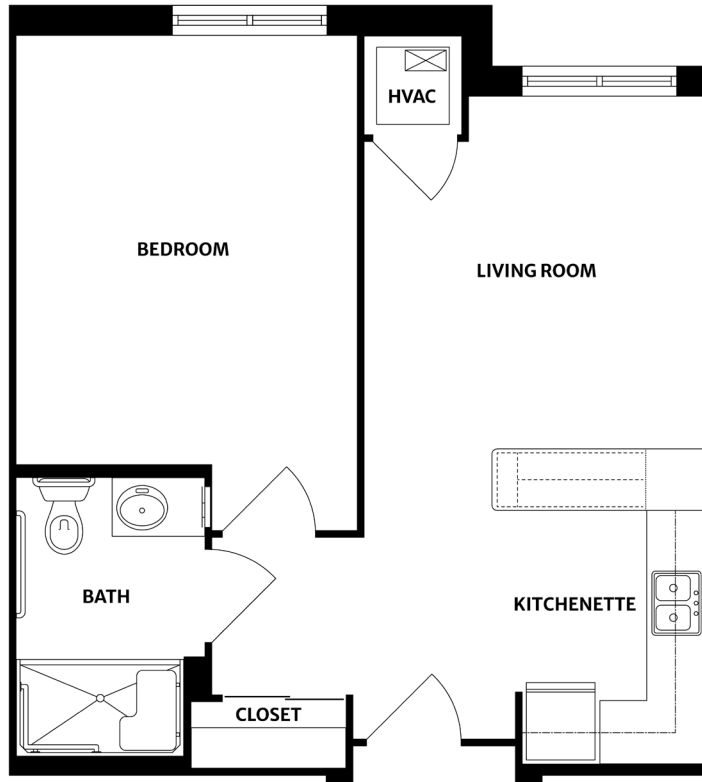


ASSISTED LIVING STANDARD

One-Bedroom, One-Bath | 544 Square Feet

\$_____/Monthly Fee \$_____/Entrance Fee

East Ridge
at Cutler Bay
A SantaFe Senior Living Community



Amenities

Assisted Living residents enjoy the following amenities:

- Assistance with medication by medication technicians and licensed nurses
- Nurse services
- Nutritious chef-prepared meals
- Full-service beauty salon
- Emergency call system in each residence
- Medical office on site
- Diabetes management
- Colostomy monitoring
- Home health service
- Assistance with activities of daily living (ADLs)
- Set up of transportation for outings (doctor appointments, family occasions, etc.)
- Emergency response system with pendant
- Podiatry, dental, and vision services; primary care physician visits
- Meal deliveries to rooms
- Life-enriching activities
- Physical, occupational, and speech therapies
- Vitality care coordinator
- Monthly evaluations
- Entrance gate staffed 24/7
- Nursing supervision 24/7
- Foley catheter care
- Skin checks
- Daily housekeeping
- Laundry and towel service

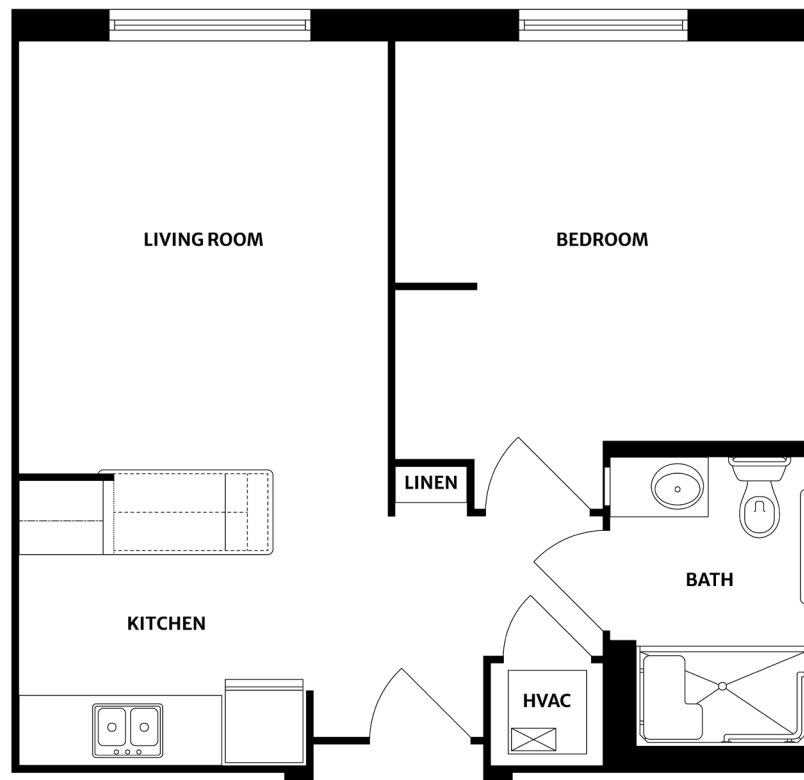
305-256-3564 | EastRidgeAtCutlerBay.com | 19301 SW 87th Avenue | Cutler Bay, FL 33157

ASSISTED LIVING DELUXE

One-Bedroom, One-Bath | 543 Square Feet

\$_____/Monthly Fee \$_____/Entrance Fee

East Ridge
at Cutler Bay
A SantaFe Senior Living Community



Amenities

Assisted Living residents enjoy the following amenities:

- Assistance with medication by medication technicians and licensed nurses
- Nurse services
- Nutritious chef-prepared meals
- Full-service beauty salon
- Emergency call system in each residence
- Medical office on site
- Diabetes management
- Colostomy monitoring
- Home health service
- Assistance with activities of daily living (ADLs)
- Set up of transportation for outings (doctor appointments, family occasions, etc.)
- Emergency response system with pendant
- Podiatry, dental, and vision services; primary care physician visits
- Meal deliveries to rooms
- Life-enriching activities
- Physical, occupational, and speech therapies
- Vitality care coordinator
- Monthly evaluations
- Entrance gate staffed 24/7
- Nursing supervision 24/7
- Foley catheter care
- Skin checks
- Daily housekeeping
- Laundry and towel service

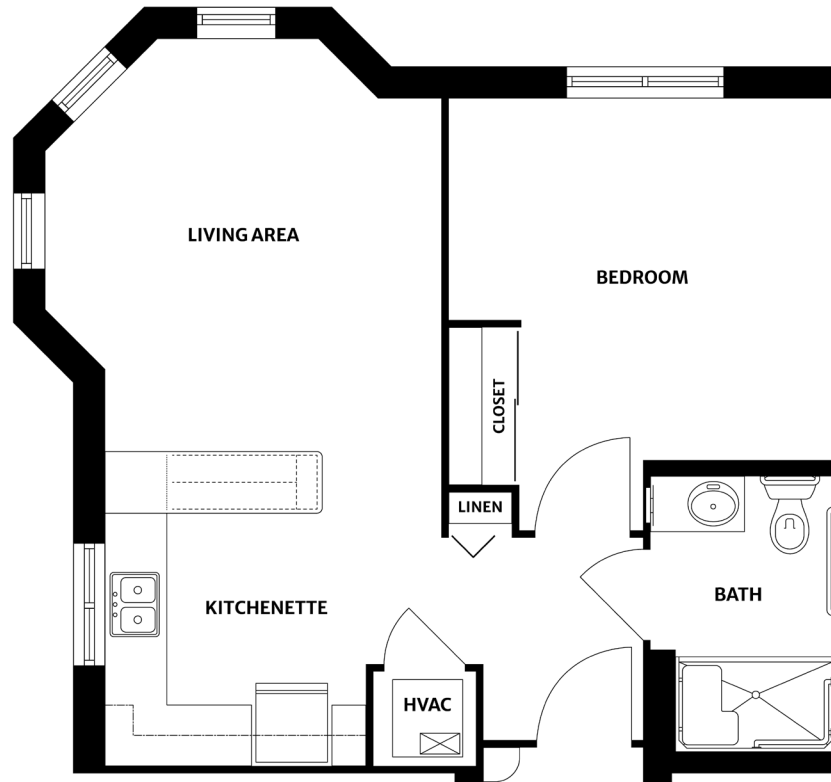
305-256-3564 | EastRidgeAtCutlerBay.com | 19301 SW 87th Avenue | Cutler Bay, FL 33157

ASSISTED LIVING TRADITIONAL

One-Bedroom, One-Bath | 573 Square Feet

\$_____/Monthly Fee \$_____/Entrance Fee

East Ridge
at Cutler Bay
A SantaFe Senior Living Community



Amenities

Assisted Living residents enjoy the following amenities:

- Assistance with medication by medication technicians and licensed nurses
- Nurse services
- Nutritious chef-prepared meals
- Full-service beauty salon
- Emergency call system in each residence
- Medical office on site
- Diabetes management
- Colostomy monitoring
- Home health service
- Assistance with activities of daily living (ADLs)
- Set up of transportation for outings (doctor appointments, family occasions, etc.)
- Emergency response system with pendant
- Podiatry, dental, and vision services; primary care physician visits
- Meal deliveries to rooms
- Life-enriching activities
- Physical, occupational, and speech therapies
- Vitality care coordinator
- Monthly evaluations
- Entrance gate staffed 24/7
- Nursing supervision 24/7
- Foley catheter care
- Skin checks
- Daily housekeeping
- Laundry and towel service

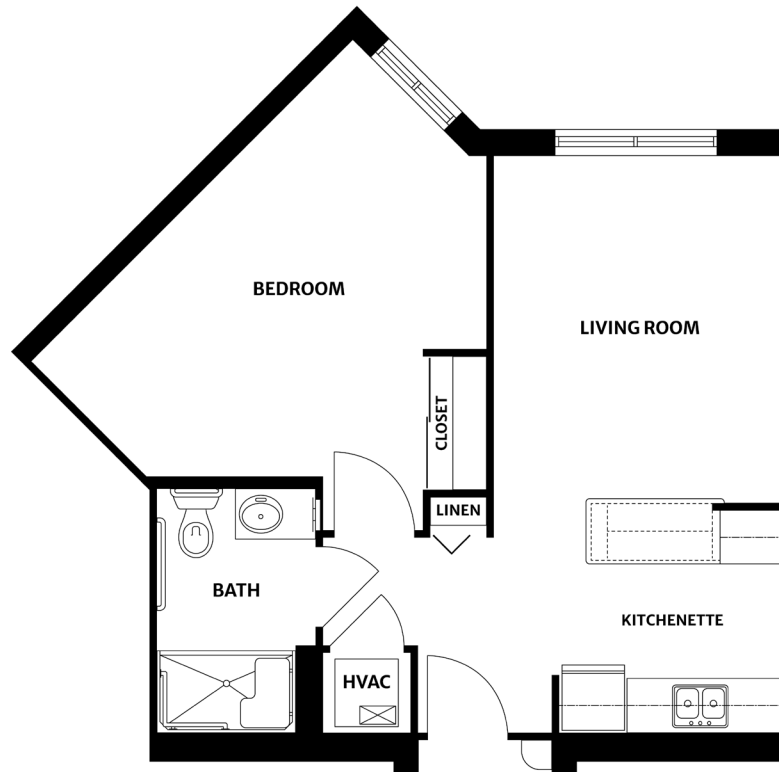
305-256-3564 | EastRidgeAtCutlerBay.com | 19301 SW 87th Avenue | Cutler Bay, FL 33157

ASSISTED LIVING SPECIAL

One-Bedroom, One-Bath | 590 Square Feet

\$_____/Monthly Fee \$_____/Entrance Fee

East Ridge
at Cutler Bay
A SantaFe Senior Living Community



Amenities

Assisted Living residents enjoy the following amenities:

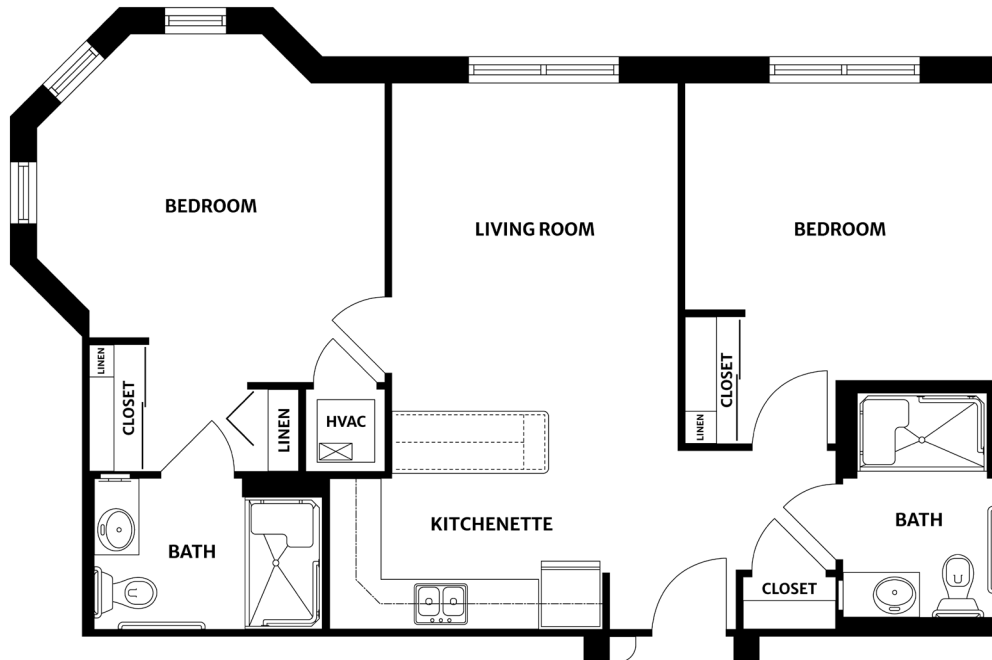
- Assistance with medication by medication technicians and licensed nurses
- Nurse services
- Nutritious chef-prepared meals
- Full-service beauty salon
- Emergency call system in each residence
- Medical office on site
- Diabetes management
- Colostomy monitoring
- Home health service
- Assistance with activities of daily living (ADLs)
- Set up of transportation for outings (doctor appointments, family occasions, etc.)
- Emergency response system with pendant
- Podiatry, dental, and vision services; primary care physician visits
- Meal deliveries to rooms
- Life-enriching activities
- Physical, occupational, and speech therapies
- Vitality care coordinator
- Monthly evaluations
- Entrance gate staffed 24/7
- Nursing supervision 24/7
- Foley catheter care
- Skin checks
- Daily housekeeping
- Laundry and towel service

305-256-3564 | EastRidgeAtCutlerBay.com | 19301 SW 87th Avenue | Cutler Bay, FL 33157

ASSISTED LIVING GRAND

Two-Bedroom, Two-Bath | 849 Square Feet
\$_____/Monthly Fee \$_____/Entrance Fee

East Ridge
at Cutler Bay
A SantaFe Senior Living Community



Amenities

Assisted Living residents enjoy the following amenities:

- Assistance with medication by medication technicians and licensed nurses
- Nurse services
- Nutritious chef-prepared meals
- Full-service beauty salon
- Emergency call system in each residence
- Medical office on site
- Diabetes management
- Colostomy monitoring
- Home health service
- Assistance with activities of daily living (ADLs)
- Set up of transportation for outings (doctor appointments, family occasions, etc.)
- Emergency response system with pendant
- Podiatry, dental, and vision services; primary care physician visits
- Meal deliveries to rooms
- Life-enriching activities
- Physical, occupational, and speech therapies
- Vitality care coordinator
- Monthly evaluations
- Entrance gate staffed 24/7
- Nursing supervision 24/7
- Foley catheter care
- Skin checks
- Daily housekeeping
- Laundry and towel service

305-256-3564 | EastRidgeAtCutlerBay.com | 19301 SW 87th Avenue | Cutler Bay, FL 33157